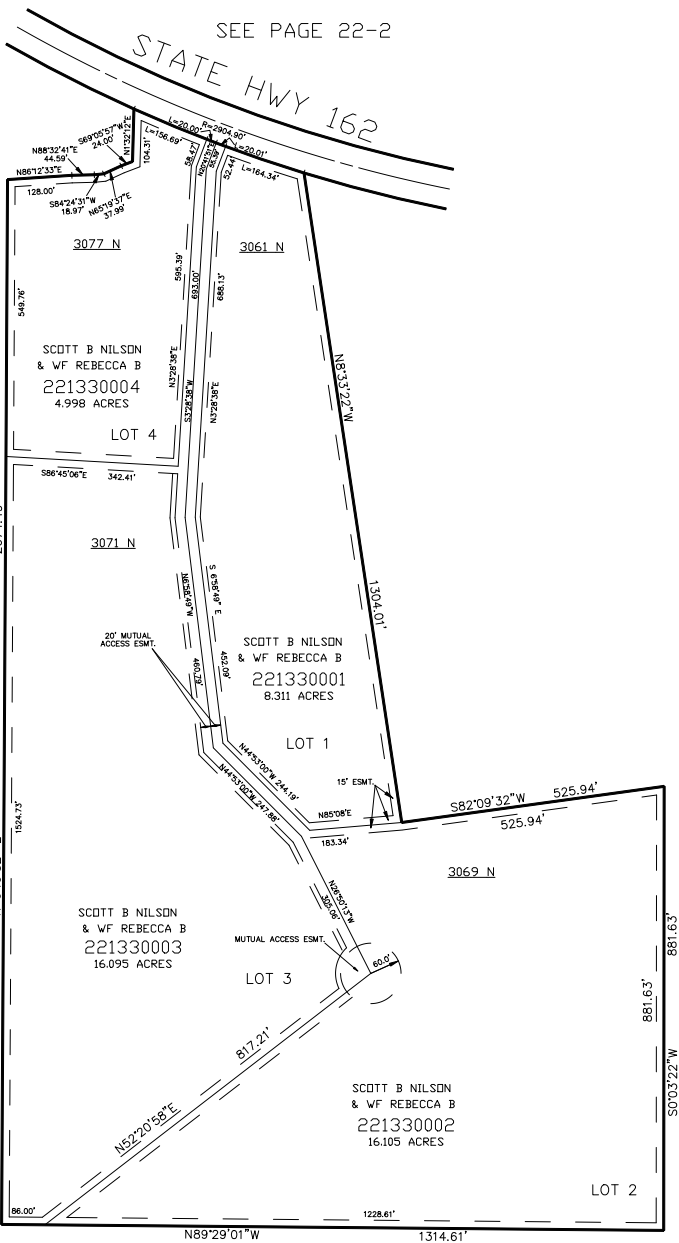


SOUTHEAST 1/4 OF SECTION 28, T.7N., R.1E., S.L.B. & M.
EDEN ESTATES SUBDIVISION

IN WEBER COUNTY
SCALE 1" = 200'

TAXING UNIT: 28

133



SEE PAGE 22-2

SEE PAGE 22-2

SEE PAGE 22-2

FOR COMPLETE ENG DATA SEE
ORIGINAL DEDICATION PLAT IN
BOOK 43, PAGE 37 OF RECORDS.

10' UTILITY & DRAINAGE EASEMENTS EACH
SIDE OF PROPERTY LINES AS INDICATED
BY DASHED LINES EXCEPT AS OTHERWISE
SHOWN.